

# RSA REGIONAL SELECTIVE ASSISTANCE

## 2018/19 Annual Summary

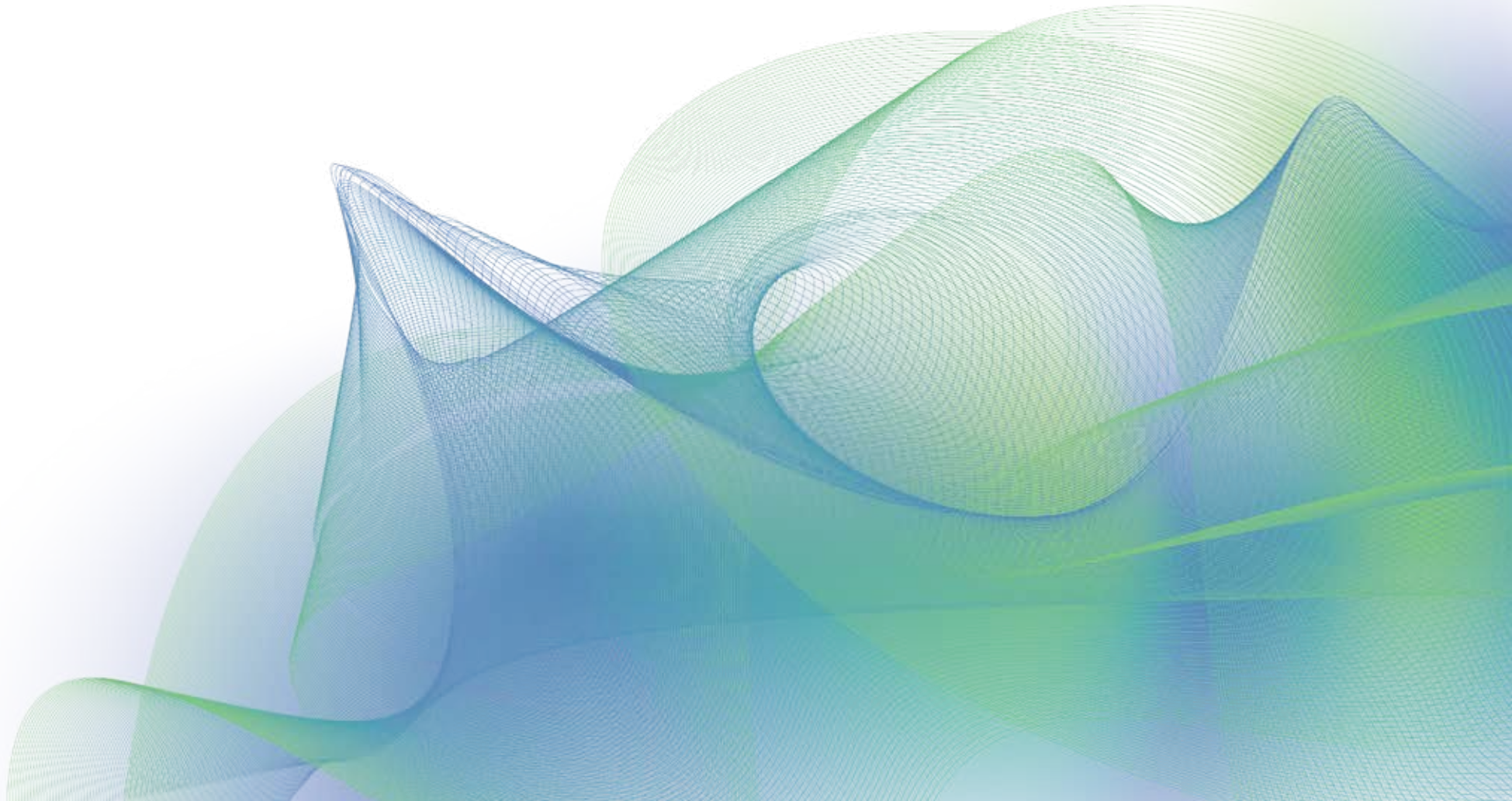


**In 2018/19 businesses across a wide range of sectors accepted 69 offers of RSA totalling **£24.5 million**.**

These offers relate to projects with planned capital expenditure of £316.4m and the expected creation or safeguarding of 2,394 jobs.

SMEs accounted for 68 (99%) of the accepted RSA offers with total grant of £17.9 million. These projects involve planned investment of £64.4 million with the aim of creating or safeguarding 1,918 jobs.

The tables below compare this year's figures against the previous 3 years.



OFFERS ACCEPTED (NUMBER)	2018/19	2017/18	2016/17	2015/16
Scottish owned	59 (86%)	67 (89%)	57 (88%)	49 (76%)
UK (Non Scottish) owned	6 (9%)	6 (8%)	4 (6%)	6 (9%)
Foreign owned	4 (6%)	2 (3%)	4 (6%)	10 (15%)
<b>Total</b>	<b>69</b>	<b>75</b>	<b>65</b>	<b>65</b>

OFFERS ACCEPTED (AMOUNT)	2018/19	2017/18	2016/17	2015/16
Scottish owned	£15m (61%)	£10.1m (72%)	£9.3m (57%)	£8.9m (52%)
UK (Non Scottish) owned	£8.1m (33%)	£3.5m (25%)	£2.8m (17%)	£3.5m (20%)
Foreign owned	£1.4m (6%)	£0.4m (3%)	£4.1m (25%)	£4.8m (28%)
<b>Total</b>	<b>£24.5m</b>	<b>£14m</b>	<b>£16.2m</b>	<b>£17.1m</b>

PLANNED CAPITAL EXPENDITURE	2018/19	2017/18	2016/17	2015/16
Scottish owned	£54.4m (17%)	£42.8m (91%)	£34.1m (91%)	£51m (51%)
UK (Non Scottish) owned	£253.2m (80%)	£3.8m (8%)	£0.3m (1%)	£29m (29%)
Foreign owned	£8.8m (3%)	£0.2m (1%)	£3m (8%)	£19.5m (20%)
<b>Total</b>	<b>£316.4m</b>	<b>£46.8m</b>	<b>£37.5m</b>	<b>£99.3m</b>

PLANNED JOBS	2018/19	2017/18	2016/17	2015/16
Scottish owned	1,659 (69%)	1,243 (71%)	1,065 (65%)	1,110 (59%)
UK (Non Scottish) owned	620 (26%)	466 (27%)	140 (9%)	326 (17%)
Foreign owned	115 (5%)	43 (2%)	425 (26%)	453 (24%)
<b>Total</b>	<b>2,394</b>	<b>1,752</b>	<b>1,630</b>	<b>1,889</b>

## Full list of companies that accepted an RSA offer in 2018/19

### QUARTER 1

AGR Automation Limited  
Armadilla Ltd.  
Avtex (Scotland) Ltd  
Bellfield Brewery Limited  
Caledonian Global Ltd  
Central Group Holdings Limited  
Copofi Limited  
Cube Glass Ltd  
Cyclotricity Limited  
East Neuk Organic Brewing & Distilling Ltd  
French Duncan (Financial Controller) Limited  
GDR Food Technology Limited  
Global Voices Ltd.  
Image On Glass Limited  
MMR Limited  
Pollok Williamson  
Quantum Packaging Limited  
Quin Global (UK) Ltd.  
Rennie Engineering Limited  
Renovite Technologies Limited  
Richmond Containers CTP Ltd  
Tayside Aviation Limited  
Together Energy Limited  
Transiris Scotland Ltd  
Travelnest Limited  
Trossachs Distillery Limited  
Urban Foresight Limited

### QUARTER 2

Aimers Coffee And Tea Ltd  
(Formerly James Aimer Limited)  
Andersen Caledonia Limited  
AvantiCell Science Limited  
Barclays Services Limited  
C.B Technology Ltd.  
Control Valve Solutions Limited  
Culzean Textile Solutions Ltd.  
Daw Signs Limited  
Enocell Limited  
Fife Fabrications Limited  
First Opinion Ltd  
Giacopazzi's Wholesale Icecream Ltd  
H.I.E. Ltd.  
Quartztec Europe Limited  
Republic of Munchery Limited T/A Wilsons  
Robert P. Slight & Sons Limited  
Sips ECO Panel Systems Limited  
Strathberry Limited  
Walker Precision Engineering Limited

### QUARTER 3

Adams Foods (Motherwell) Ltd  
Aquapac Limited  
CarMoney Limited  
Clydebank Engineering and Fabrication Limited  
Fore Digital Limited  
GM Instruments Limited  
GWF Power Gener8 Limited  
SGZ Cononish Limited  
Steadvale Air Systems Limited  
Stirling Gin Ltd

### QUARTER 4

Biofilm Holdings Limited  
BMG Research Ltd  
Bourse Scot Ltd  
Caresourcer Limited  
Cloud Cover IT Services Limited  
Customer Experience People Limited  
Dovetail Enterprises (1993) Limited  
Eribe Knitwear Ltd  
Fourstones Paper Mill Co Limited  
Incremental Group Limited  
Logan Energy Limited  
Murphy Engineering (Scotland) Ltd  
OnScale Ltd

## BACKGROUND

Regional Selective Assistance (RSA) is the main national scheme of financial assistance to industry. It provides discretionary grants to investment projects that will create and safeguard employment in the Assisted Areas – areas designated for regional aid under European Community law. It also includes 'Tier 3' assistance in other designated areas where we can offer support to Small and Medium-sized Enterprises (SMEs), delivered under the EC's General Block Exemption Regulations.

Payment of RSA is made in instalments, typically over several years as job and capital expenditure targets are met. Not all projects will proceed, and nor do all accepted offers result in full payment, as projects are sometimes scaled down or abandoned before payments are made. The figures quoted in the tables, therefore, represent the maximum grant potentially payable if the project is satisfactorily completed, and **not** the amount actually paid to date. All job numbers given in this report are firms' forecast figures, and are subject to change depending on future economic conditions and other factors affecting the businesses concerned.

For more information on RSA go to [www.scottish-enterprise.com/rsa](http://www.scottish-enterprise.com/rsa) or contact:

### Scottish Enterprise Enquiry Service

Regional Selective Assistance  
2 Mariner Court  
8 South Avenue  
Clydebank Business Park  
Clydebank  
Glasgow  
G81 2NR

Telephone: **0845 607 8787**

E-mail: [rsa@scotent.co.uk](mailto:rsa@scotent.co.uk)